

JK Cement SmoothMaxX Technical Specifications

S No	Quality Parameters	Unit	Specification Range	JK Cement SmoothMaxX	Competition Branded Wall Putty
1	Whiteness	%	≥ 95.0	96.5	92 - 93.3
2	Water Demand	%	38.0 - 42.0	42	38 - 40
3	Mixing	Easy	Easy/Hard	Easy	Easy
4	Pot Life	Minutes	Min. 120	200	170 - 180
5	Workability (At the time of Application)	Rating	>4	5	3
6	Tensile Adhesion Strength @ 14 Days	N/mm ²	> 1.10	1.18	1.02
7	Water Absorption @ 14 days in 30 Minutes	ml	≤ 0.5	0.1	0.1
8	Coverage	Sq.ft/Kg	Min. 18.0	20 - 22	15 - 17

Do's



Dirt Free Wall Surface



Pre - Wet Wall Surface



Stir Well before using



Store in Cool and Dry Place

Don'ts



Don't apply on dirty wall surfaces



Do not add extra water to make the paste workable



Do not re-mix the already hardened paste



Do not apply wet on wet, use wet on dry process for application of putty



Central Marketing Office: Padam Tower, 19 DDA Community Center
Phase-I, Okhla, New Delhi - 110 020 Tel.: 011 49220000
E-mail: jkwc.delhi@jkcement.com Toll Free No.: 1800 102 8868

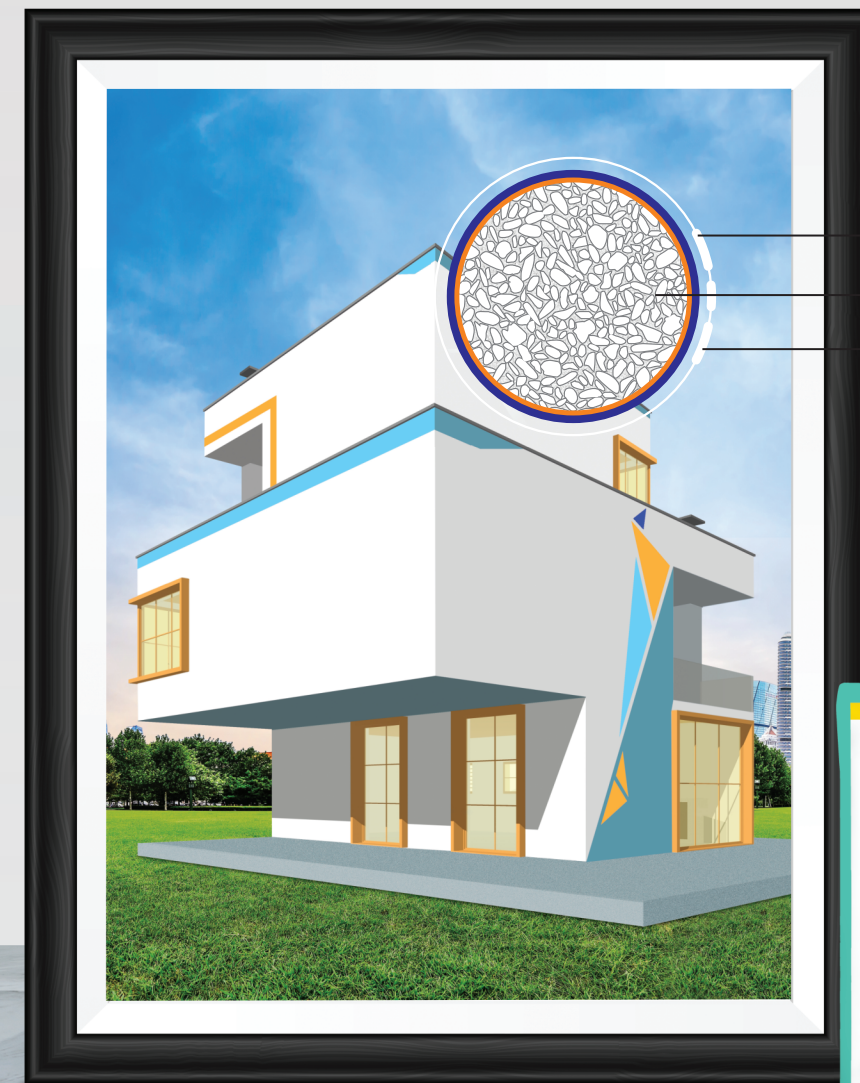
Website : www.jkcement.com 






JK CEMENT **SmoothMaxX** Super Smooth Wall Putty



For a Flawless, Pearl-like finish



-  Minimises Water Ingress
-  Micro-Particle Matrix
-  Premium Finish



For Interior & Exterior Walls
FOR INTERIOR & EXTERIOR WALLS

About JK Cement

JK Cement Ltd. is one of the leading cement manufacturers in India that has partnered the Nation's multi-sector infrastructure needs on the strength of its product excellence, customer orientation and technology leadership. A pioneer in the White Cement industry, the company is the leading producer of Wall Putty in the Country and one of the largest white cement manufacturers in the world.

About JK CEMENT **SmoothMaxX** Super Smooth Wall Putty

JK Cement SmoothMaxX is specially designed with Micro Particle Technology which ensures a complete matrix to develop an extra smooth coat leading to flawless, pearl like finish on walls.

JK Cement SmoothMaxX enhances the look of your wall in three ways



**Monolithic
premium finish**



**Lustrous white
smooth surface with
water-resistant property**

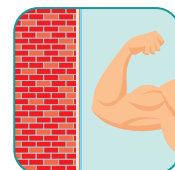


**Enhanced
paint coverage**

JK Cement SmoothMaxX also provides



**UNMATCHED WHITENESS
(Min. 95%*- In terms of
Reflectance) PREMIUM FINISH**



**SUPERIOR ADHESION –
LEADS TO A STRONGER BASE**



**HIGHER COVERAGE*
20 sq.ft. per kg in 2 coats**

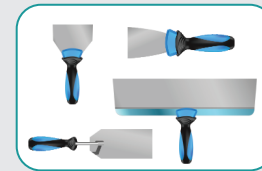
***Terms & Condition :**

1. JK Cement Ltd. reserves the right to revise product specification without notice. The information herein should not be read in isolation as it is meant only as guidance for the user, who should always ensure that they are fully conversant with the products and systems being used and their subsequent installation prior to the commencement of work.
2. The above mentioned parameters are tested under lab conditions. Actual performance depends on site usage, conditions and working.

APPLICATION TOOLS

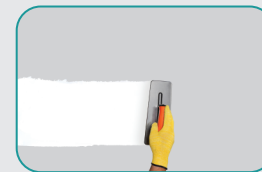


MECHANICAL STIRRER



PUTTY TOOLS

AREAS OF APPLICATION



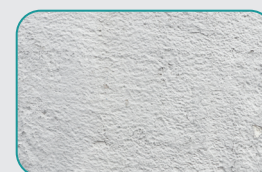
CEMENT BASE PLASTER /
COARSE PLASTER



CONCRETE WALLS



CEILING SURFACE



DRY WALLS

APPLICATION METHOD



Step-1

Clean the surface thoroughly. Free it from dust, dirt, organic solvents & oil



Step-2

Mechanical mixing with stirrer is recommended for mixing. Use 38% to 42% water while mixing. Wait for 5 minutes before applying it. Prepared paste should be used within 2 to 3 hours



Step-3

Before application Pre wet the wall surface to remove loose dust particles



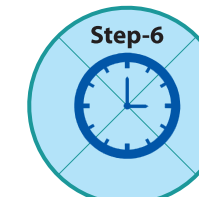
Step-4

The homogeneous paste to be applied using spatula / blade / trowel for first coat, from bottom to top and the second coat horizontally



Step-5

After drying of first coat remove all loose particles with sponge / cloth / putty blade



Step-6

Before application Pre wet the wall surface to remove loose dust particles



Step-7

Wait for the surface to dry completely before the application of paint or distemper for premium look